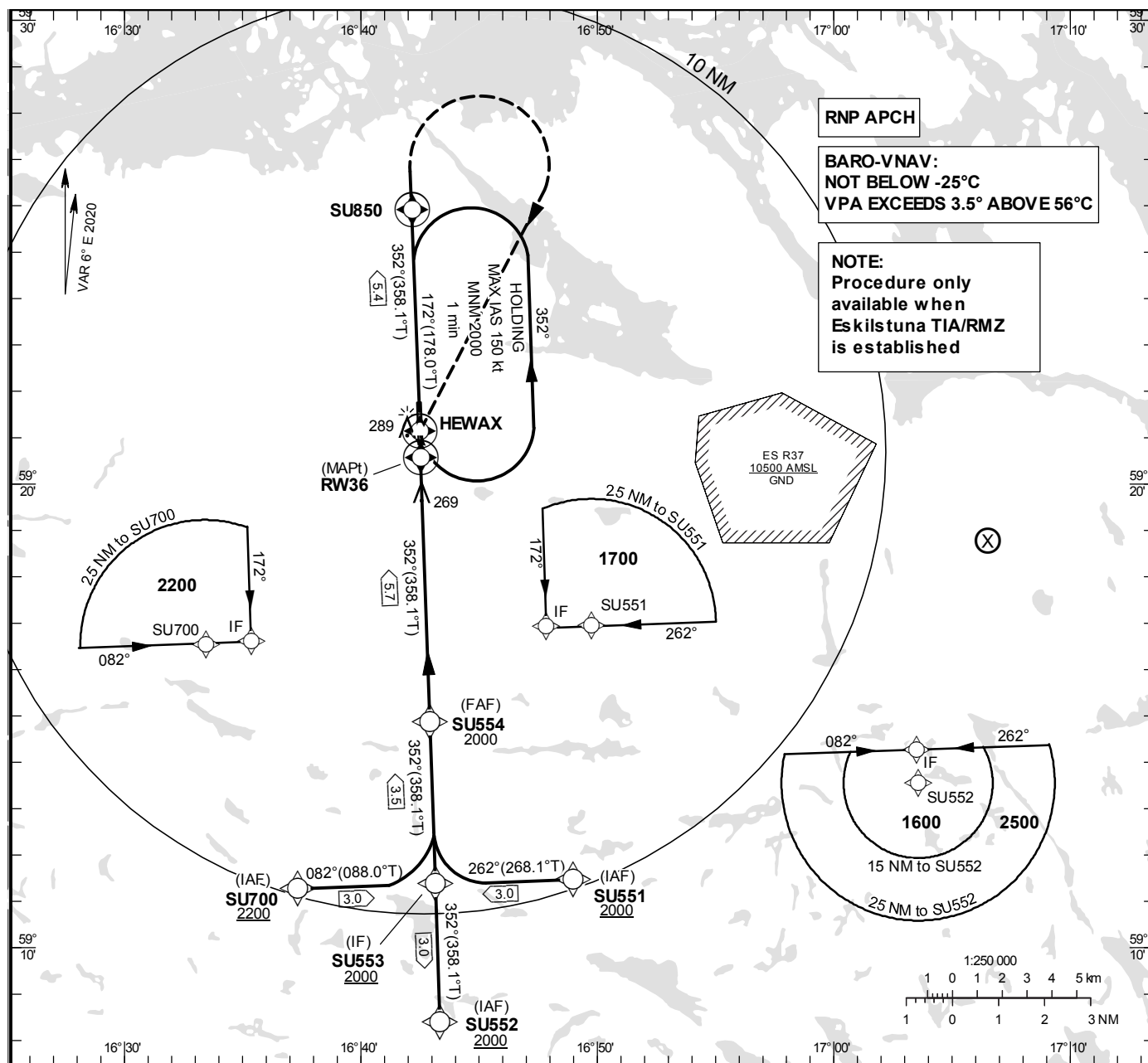


THR ELEV 130.4 ft, AD ELEV 140 ft
OCH are related to THR.
BRG are MAG (True).
ALT, HGT and ELEV in ft.

ESKILSTUNA INFORMATION

126.855

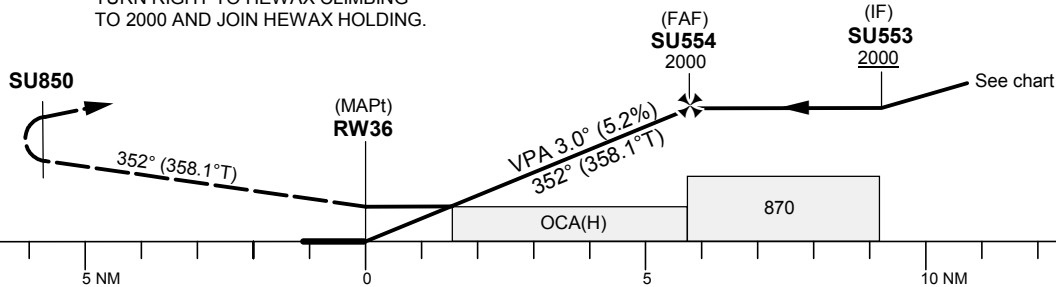
EGNOS Ch 77384 E 36A



TA 5000 ft AMSL

RDH 51 ft

CLIMB STRAIGHT AHEAD TO SU850,
TURN RIGHT TO HEWAX CLIMBING
TO 2000 AND JOIN HEWAX HOLDING.



OCA (H)			Final approach	Distance FAF-MAPt 5.7 NM							
Cat of ACFT	A	B	Dist to RW36	5		4		3		2	
LPV	477(347)	489(359)	ALT	1770		1450		1140		820	
LNAV/VNAV	477(347)	489(359)	GS	kt	70	80	90	100	110	120	130
LNAV	600(470)		Rate of descent	ft/min	370	425	480	530	585	635	690

CHANGE: Editorial

ESKILSTUNA

RNP RWY 36 via SU551

Path Desc	Waypoint Identifier	Fly-over	Course °M(°T)	Dist (NM)	Turn Dir	Altitude	Speed	VPA/ RDH	Rec Navaid	Navigation Specification
IF	SU551	-	-	-	-	+2000	-	-	-	RNP APCH
TF	SU553	-	262°(268.1°)	3.0	-	+2000	-	-	-	RNP APCH

RNP RWY 36 via SU700

Path Desc	Waypoint Identifier	Fly-over	Course °M(°T)	Dist (NM)	Turn Dir	Altitude	Speed	VPA/ RDH	Rec Navaid	Navigation Specification
IF	SU700	-	-	-	-	+2200	-	-	-	RNP APCH
TF	SU553	-	082°(088.0°)	3.0	-	+2000	-	-	-	RNP APCH

RNP RWY 36 via SU552

Path Desc	Waypoint Identifier	Fly-over	Course °M(°T)	Dist (NM)	Turn Dir	Altitude	Speed	VPA/ RDH	Rec Navaid	Navigation Specification
IF	SU552	-	-	-	-	+2000	-	-	-	RNP APCH
TF	SU553	-	352°(358.1°)	3.0	-	+2000	-	-	-	RNP APCH

Path Desc	Waypoint Identifier	Fly-over	Course °M(°T)	Dist (NM)	Turn Dir	Altitude	Speed	VPA/ RDH	Rec Navaid	Navigation Specification
IF	SU553	-	-	-	-	+2000	-	-	-	RNP APCH
TF	SU554	-	352°(358.1°)	3.5	-	@2000	-	-	-	RNP APCH
TF	RW36	Y	352°(358.1°)	5.7	-	@181	-	-3.0/50	-	RNP APCH
TF	SU850	Y	352°(358.1°)	5.4	-	-	-	-	-	RNP APCH
DF	HEWAX	Y	-	-	R	-	-	-	-	RNP APCH

ESSU Holding HEWAX

Path Desc	Waypoint Identifier	Fly-over	Course °M(°T)	Dist (NM)	Turn Dir	Altitude	Speed	VPA/ RDH	Rec Navaid	Navigation Specification
HM	HEWAX	Y	172°(178.0°)	-	L	+2000	-150	-	-	RNP 1

FAS Data Block

RNP RWY 36

Input data

Operation Type	0
SBAS Provider	1 (EGNOS)
Airport Identifier	ESSU
Runway	36
Runway Letter	0 (None)
Approach Performance Designator	0
Route Indicator	
Reference Path Data Selector	0
Reference Path Identifier	E36A
LTP/FTP Latitude	592033.4240N
LTP/FTP Longitude	0164232.2805E
LTP/FTP Ellipsoidal Height (metres)	65.5
FPAP Latitude	592134.3390N
Delta FPAP Latitude (seconds)	60.9150
FPAP Longitude	0164228.2135E
Delta FPAP Longitude (seconds)	-4.0670
Threshold Crossing Height	51.0
TCH Units Selector	0 (feet)
Glidepath Angle (degrees)	3.00
Course Width (metres)	105.00
Length Offset (metres)	0
HAL (metres)	40.0
VAL (metres)	50.0

Output data

Data Block	10 15 13 13 05 24 00 00 01 36 33 05 20 93 77 19 B1 B3 2B 07 8F 16 E6 DB 01 3A E0 FF FE 01 2C 01 64 00 C8 FA C8 81 83 7D
Calculated CRC Value	C881837D
Supplied CRC Value	C881837D
Comparison Result	OK

Required Additional Data

ICAO Code	ES
LTP/FTP Orthometric Height (metres)	39.8